

**SAN DIEGO ENAMEL GUILD  
AUTUMN SHOW  
OCTOBER 1 - OCTOBER 31, 2019**

This Juried Exhibition is a show of enamel arts.

**RECEPTION FOR THE ARTISTS**

**Saturday, Oct. 5,  
4:30-6:30 PM**

**Award presentation  
5:30 PM**

**Gallery Open Every  
Day  
11:00 AM-4:00 PM**

**Studio 5/Spanish  
Village Art Center  
1770 Village Place  
Balboa Park  
San Diego, CA  
92101**



**JURORS:** The 2019 San Diego Enamel Guild Board will jury the show. Board members are allowed to enter their own artworks, but are excluded from awards.

**AWARDS:** Cash awards for 1<sup>st</sup> (\$100), 2<sup>nd</sup> (\$75) and 3<sup>rd</sup> (\$50) place in STUDENT and non-student categories

**ELIGIBILITY:** Open to San Diego Enamel Guild Full and Associate members, enameling students, and other enamelists residing in San Diego County.

**SALES:** All work must be for sale and must remain in studio until the close of the show on October 31. Artist will receive 75% of sale, with a 25% commission to SDEG.

**SPECIFICATIONS:** ~ All 2D and 3D original artwork can be entered for jurying. Artworks must be reasonably sized, not have been previously exhibited in Studio 5, and suitable for family viewing. Works larger than 20" x 20" may be excluded from the show at the discretion of the board.

~Work must be original by the artist, created within the last two years and not previously exhibited in any show. It may not be derived from copyrighted or published material.

**2-DIMENSIONAL WORK:** MUST be framed or have all sides of piece finished and supported by proper gauge wire suitable for hanging. No sawtooth hangers.

**3-DIMENSIONAL WORK:**

3 Dimensional artworks are accepted but must fit within the size parameters the



studio can accommodate. No work requiring electricity.

**LIABILITY:**

Although the utmost care will be taken in handling the artwork, Studio 5 and the organizers of the Mini Image Show are not responsible for damage or loss, whatever the cause. Artists should carry their own insurance.

**SUBMISSION GUIDELINES:**

Entries are limited to three pieces per artist.

All artwork entries must be submitted as digital images emailed as an attachment. Digital image should be in .jpg format with the longest side set to 1200 pixels.

**Name your file as follows:**

**lastname-title.jpg**

**(example: smith-AutumnLeaves.jpg)**

Send your Autumn Image jpeg file to the following email address:

**[admin@sandiegoenamelguild.org](mailto:admin@sandiegoenamelguild.org)**

with "Autumn show" in the subject line.

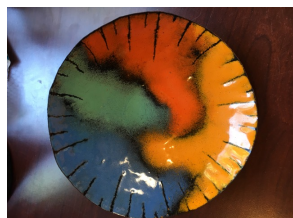
If accepted, deliver your artworks to the following street address:

San Diego Enamel Guild  
1770 Village Place, Studio 5, Spanish  
Village Art Center, Balboa Park, San  
Diego, CA 92101 USA

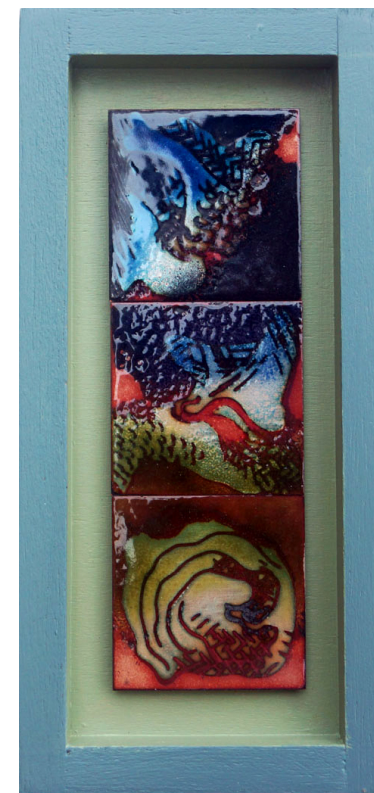
Questions, contact us at:  
SDEG ~ 619-233-3672, or  
[admin@sandiegoenamelguild.org](mailto:admin@sandiegoenamelguild.org)

#### CALENDAR OF EVENTS:

August 1 - Entries Open  
September 1 - Entries Close  
September 21 - Jury Date  
September 22 - Notification of  
Acceptance  
September 28-29 - Delivery of  
accepted art to Studio 5,  
9:30am - 4:00pm  
October 1 - Exhibit Opens @ 11am  
October 5 - Reception 4:30-6:30pm;  
Awards presented @  
5:30pm  
October 31 - Show Closes @ 12pm.  
Art pickup 12- 4:00pm



## **San Diego Enamel Guild Fall Mini Image Show October 1- October 31 2019**



San Diego Enamel Guild  
1770 Village Place, Studio 5, Spanish  
Village Art Center, Balboa Park, San  
Diego, CA 92101 USA  
619-233-3672  
[www.sandiegoenamelguild.org](http://www.sandiegoenamelguild.org)