



SAN DIEGO ENAMEL GUILD AUTUMN SHOW

September 11 - October 26, 2022

RECEPTION FOR THE ARTISTS

Saturday, September 17, 2022
5 to 7 PM

Award presentation 6 pm

Gallery Open Every Day

11:00 AM-4:00 PM

Studio 5/Spanish Village Art Center
1770 Village Place
Balboa Park San Diego, CA 92101

JURORS: The 2022 San Diego Enamel Guild Board will jury the show. Board members are allowed to enter their own artworks, but are excluded from awards.

AWARDS: Cash awards for 1st (\$200), 2nd (\$100) and 3rd (\$75) place



ELIGIBILITY: Open to San Diego Enamel Guild members and other enamelist residing in San Diego County.

SALES: All work must be for sale and must remain in studio until the close of the show.

Artists will receive 75% of sale, with a 25% commission to SDEG.

SPECIFICATIONS: ~ All 2D and 3D original artwork can be entered for jurying. 2D Artworks must not exceed 14" by 16", including frame, not have been previously exhibited in Studio 5 and suitable for family viewing. Work must be original by the artist, created within the last two years and not previously exhibited in any show. It may not be derived from copyrighted or published material.

JEWELRY: Enameling must be the main design feature of the jewelry. Mark materials used, chain type, etc.

2-DIMENSIONAL WORK: MUST be framed or have all sides of piece finished and supported by proper gauge wire suitable for hanging. No sawtooth hangers.

3-DIMENSIONAL WORK:
3 Dimensional artworks are accepted but must fit within the size parameters the studio can accommodate. No work requiring electricity.

LIABILITY: Although the utmost care will be taken in handling the artwork, Studio 5 and the organizers of the Autumn Enamel Show are not responsible for damage or loss, whatever the cause. Artists should carry their own insurance.

SUBMISSION GUIDELINES:

Entries are limited to three pieces per artist.

All artwork entries must be submitted as digital images emailed as an attachment. Digital image should be in .jpg format with the longest side set to 1200 pixels.

Name your file as follows:

lastname-title.jpg

(example: smith-AutumnLeaves.jpg)

Send your Autumn Image jpeg file to the following email address:

enamelguild@gmail.com

with "Autumn show" in the subject line.





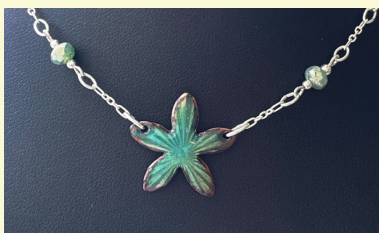
If accepted, deliver your artworks to the following address:

San Diego Enamel Guild
1770 Village Place, Studio 5, Spanish Village Art Center, Balboa Park, San Diego, CA 92101

Questions, contact us at:
SDEG ~ 619-233-3672, or
enamelguild@gmail.com

CALENDAR OF EVENTS:

- June 30- E-mail Entries Open
- August 22- E-mail Entries Close
- August 27 - Notification of Acceptance
- August 28- September 10- Delivery of accepted art to Studio 5, 9:30am - 4:00pm
- September 11 - Exhibit Opens @ 11am
- September 17 - Reception 5-7pm; Awards presented @ 6 pm
- October 26 - Show Closes @ 12pm. Art pickup 12- 4:00pm



San Diego Enamel Guild *Autumn Enamel Show*

September 11 - October 26 2022



San Diego Enamel Guild
1770 Village Place, Studio 5, Spanish Village Art Center, Balboa Park, San Diego, CA 92101
619-233-3672
www.sandiegoenamelguild.org